

MANUFACTURER:



DRAWN BY:

CHECKED BY:

PRODUCT TITLE:

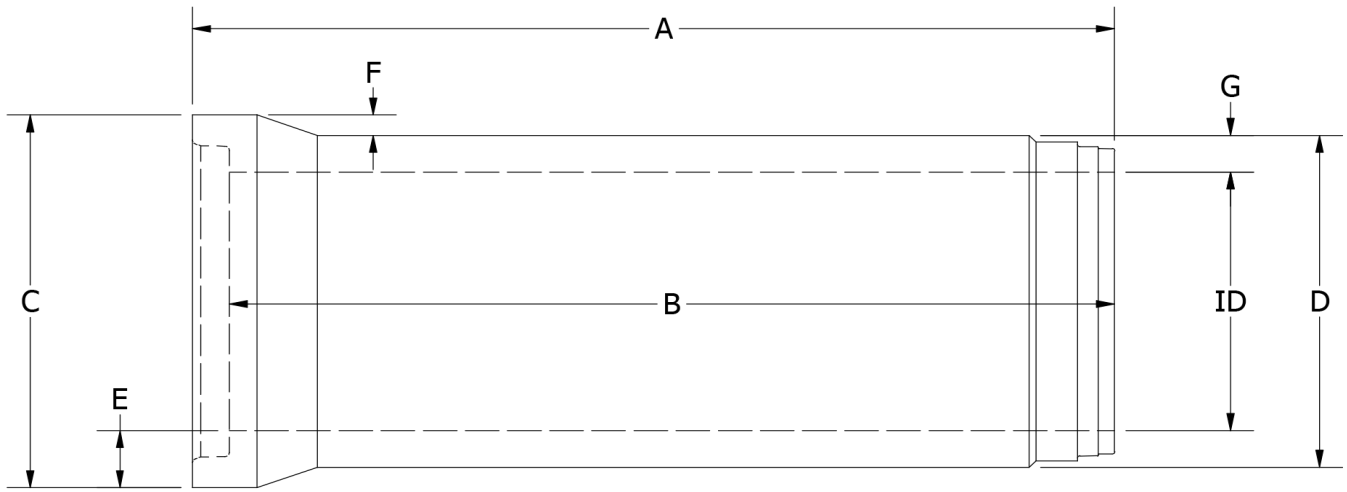
REINFORCED CONCRETE PIPE

D800 X 2500MM

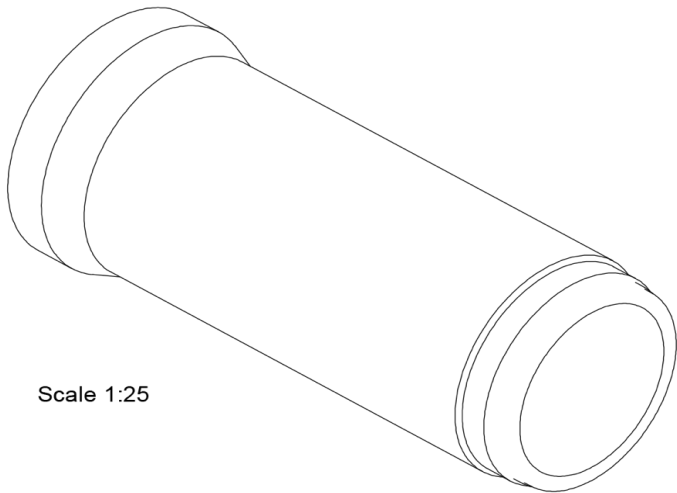
PAGE

1

PRODUCT DATA SHEET

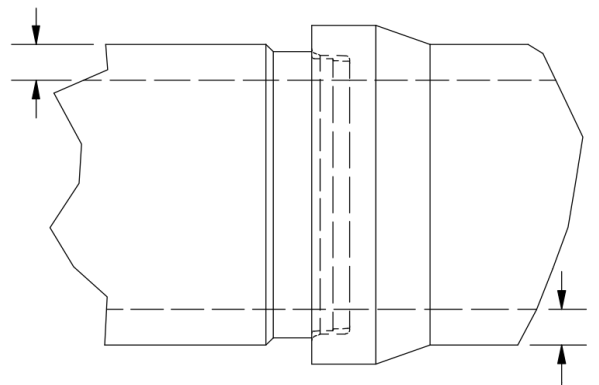


ID	A	B	C	D	E	F	G	WALL TYPE	D-LOAD CLASS	STEEL (MPa)		WEIGHT (Kg)
										INNER	OUTER	
800	2599	2500	1127	1000	163	63	100	C	II	235	N/A	1900
800	2599	2500	1127	1000	163	63	100	C	III	500	N/A	1900
800	2599	2500	1127	1000	163	63	100	C	IV	500	N/A	1900



Scale 1:25

ISOMETRICS VIEW



Scale 1:20

JOINTS VIEW

NOTES:

1. ALL DIMENSIONS SUBJECT TO ALLOWABLE SPECIFICATION TOLERANCES AND PARAMETERS
2. MATERIALS
 - 2.1 CONCRETE FOR ALL RC PIPE SHALL BE CUBE STRENGTH TEST WITH CHARACTERISTIC STRENGTH IN MPa AT 28 DAYS
 - 2.2 REBARS
 - YIELD STRENGTH IN MPa
 - TENSILE STRENGTH IN MPa
3. PIPE IS MANUFACTURED PER EUROPEAN STANDARD, AND CONFORMS/OR TO MEET ASTM C-76
4. CONCRETE STRENGTH IS 32MPa @ 28 DAYS