
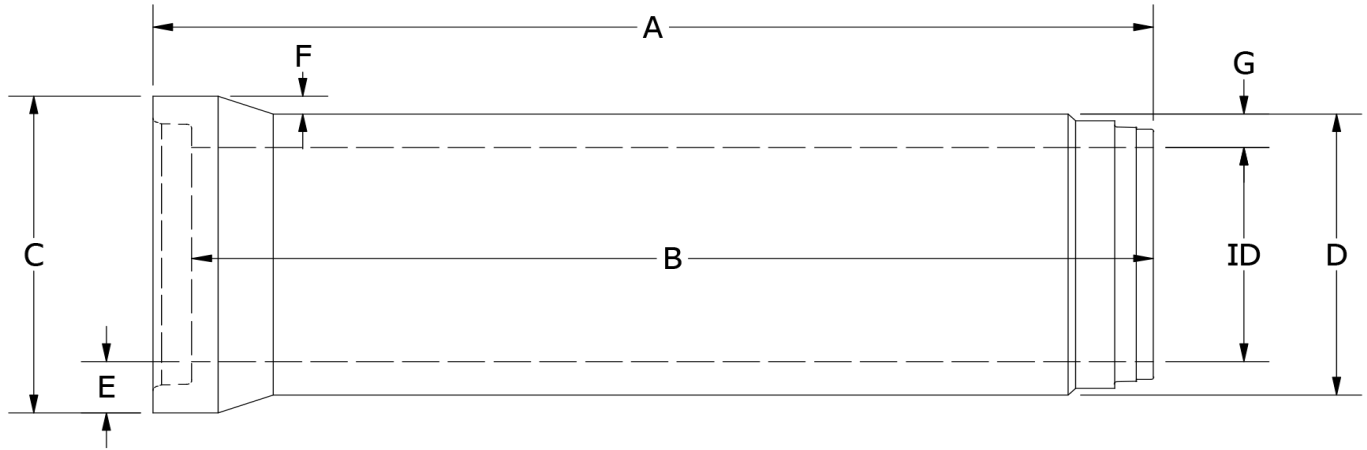
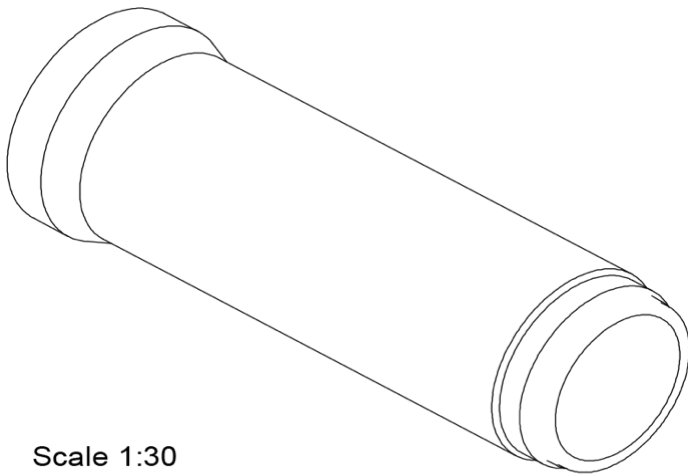


MANUFACTURER  <small>7 RIVER CONCRETE CO., LTD</small>	DRAWN BY:	PRODUCT TITLE: REINFORCED CONCRETE PIPE	PAGE 1
	CHECKED BY:	D600 X 2500MM	

PRODUCT DATA SHEET

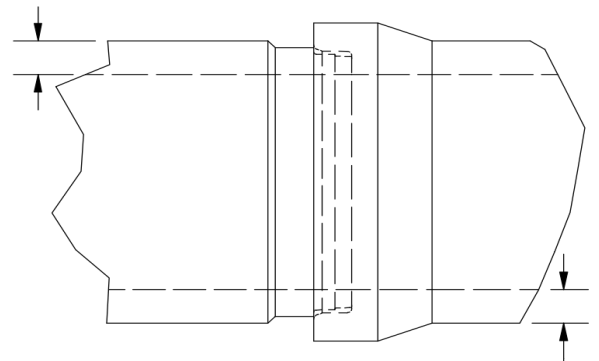


ID	A	B	C	D	E	F	G	WALL TYPE	D-LOAD CLASS	STEEL (MPa)		WEIGHT (Kg)
										INNER	OUTER	
600	2599	2500	905	760	139	59	80	C	II	235	N/A	1175
600	2599	2500	905	760	139	59	80	C	III	235	N/A	1175
600	2599	2500	905	760	139	59	80	C	IV	500	N/A	1175



Scale 1:30

ISOMETRICS VIEW



Scale 1:20

JOINTS VIEW

NOTES:

1. ALL DIMENSIONS SUBJECT TO ALLOWABLE SPECIFICATION TOLERANCES AND PARAMETERS
2. MATERIALS
 - 2.1 CONCRETE FOR ALL RC PIPE SHALL BE CUBE STRENGTH TEST WITH CHARACTERISTIC STRENGTH IN MPa AT 28 DAYS
 - 2.2 REBARS
 - YIELD STRENGTH IN MPa
 - TENSILE STRENGTH IN MPa
3. PIPE IS MANUFACTURED PER EUROPEAN STANDARD, AND CONFORMS/OR TO MEET ASTM C-76
4. CONCRETE STRENGTH IS 32MPa @ 28 DAYS